

HUMAN ADULT STEM CELLS INSTRUCTION MANUAL (ZBM-15)

SHIPPING CONDITIONS

Human Adult Stem Cells (ASC)

Orders are delivered via Federal Express courier. All US and Canada orders are shipped via Federal Express Priority service and are usually received the next day. International orders are usually received in 3-4 days.

Must be processed upon shipment receipt.

STORAGE CONDITIONS

Media: Short Term 4°C 6 months -20°C

All Zen-Bio Inc products are for research use only. Not approved for human or veterinary use or for use in diagnostic or clinical procedures.

LIMITED PRODUCT WARRANTY

This warranty limits our liability to replacement of this product. No other warranties of any kind, expressed or implied, including without limitation implied warranties of merchantability or fitness for a particular purpose, are provided by Zen-Bio, Inc. Zen-Bio, Inc. shall have no liability for any direct, indirect, consequential, or incidental damages arising out of the use, the results of use, or the inability to use this product.

Zen-Bio, Inc warrants its cells only if Zen-Bio media are used and the recommended protocols are followed. Cryopreserved adult stem cells are assured to be viable when thawed and maintained according to Zen-Bio protocols.

ORDERING INFORMATION AND TECHNICAL SERVICES

Zen-Bio, Inc.

3200 Chapel Hill-Nelson Blvd., Suite 104

PO Box 13888

Research Triangle Park, NC 27709

U.S.A.

Telephone

(919) 547-0692

Facsimile (FAX)

(919) 547-0693

Toll free (continental US only)

1-866-ADIPOSE 1-(866)-234-7673

Electronic mail (e-mail)

information@zen-bio.com

World Wide Web

<http://www.zen-bio.com>

HUMAN ADULT STEM CELLS

| <u>CONTENTS</u> | <u>PAGE #</u> |
|---|----------------------|
| Introduction | 3 |
| Materials provided for each catalog item | 3 |
| Media compositions | 4 |
| Plating and expansion of cryopreserved adult stem cells | 5 |
| Adipogenesis Protocol | 6 |
| Osteogenesis Protocol | 8 |
| Chondrogenesis Protocol | 10 |
| Troubleshooting | 1 |
| Frequently asked questions | 12 |
| Pathogen testing | 13 |

Introduction

The adipose derived adult stem cells are isolated from subcutaneous adipose tissue from elective surgery in healthy non-diabetic donors between 18 and 60 years old. They are isolated by centrifugal force after collagenase treatment. Adult stem cells can be differentiated into various lineages using Zen-Bio media formulations and protocols. This instruction manual describes procedures required to induce human adipose derived adult stem cells (ASC) to differentiate into 1) mature adipocytes, 2) osteoblasts, and 3) chondrocytes. The process of differentiating human adipose-tissue derived adult stem cells to adipocytes has been patent protected by Zen-Bio under US patent number 6153432.

Precautionary Notes

This product is for research use only. *It is not intended for human, veterinary, or in vitro diagnostic use.* Proper precautions and biological containment should be taken when handling cells of human origin, due to their potential biohazardous nature. **Always wear gloves and work behind a protective screen when handling primary human cells.** All media, supplements, and tissue cultureware used in this protocol should be sterile.

Human adult stem cell viability depends greatly on the use of suitable media, reagents, and sterile plastic wear. If these parameters are not carefully observed, limited differentiation may occur and cell growth may be slow.

Materials Provided for Each Catalog Item

❖ Cryopreserved Human Adipose-Derived Adult Stem Cells (catalog # ASC-F)

Frozen vial containing either 1.0 or 2.0×10^6 viable adult stem cells (store in liquid nitrogen upon receipt)
50 ml Preadipocyte Medium [NOTE: this medium is suitable as a plating medium for the adipose derived adult stem cells]

Media Compositions

| | | |
|--|---|---|
| <u>Preadipocyte Medium</u> <u>cat # PM-1</u> | <u>Adipocyte Differentiation</u> <u>Medium</u> <u>cat # DM-2</u> | <u>Adipocyte Maintenance</u> <u>Medium</u> <u>cat # AM-1</u> |
| DMEM / Ham's F-12 (1:1, v/v) HEPES pH 7.4 Fetal bovine serum Penicillin Streptomycin Amphotericin B | DMEM / Ham's F-12 (1:1, v/v) HEPES pH 7.4 Fetal bovine serum Biotin Pantothenate Human insulin Dexamethasone Isobutylmethylxanthine PPAR γ agonist Penicillin Streptomycin Amphotericin B | DMEM / Ham's F-12 (1:1, v/v) HEPES pH 7.4 Fetal bovine serum Biotin Pantothenate Human insulin Dexamethasone Penicillin Streptomycin Amphotericin B |
| <u>Adipocyte Basal</u> <u>Medium</u> <u>Cat# BM-1</u> | <u>Osteoblast Differentiation Medium</u> <u>Cat# OB-1</u> | <u>Chondrocyte Differentiation</u> <u>Medium</u> <u>Cat# CM-1</u> |
| DMEM / Ham's F-12 (1:1, v/v) HEPES pH 7.4 Biotin Pantothenate | DMEM / Ham's F-12 (1:1, v/v) Fetal Bovine serum β -glycerophosphate Ascorbate-2-phosphate Dexamethasone 1,25 (OH) $_2$ Vitamin D $_3$ Penicillin Streptomycin | DMEM-high glucose Fetal bovine serum Transforming growth factor β_1 (TGF- β_1) Ascorbate-2-phosphate Dexamethasone Insulin-transferrin-selenium plus (ITS+) Penicillin Streptomycin |

**NOTE: All media except Chondrocyte Medium contains 3.15g/L D-glucose.
Chondrocyte Differentiation Medium contains 4.5g/L D-glucose**

All media are also available as serum-free and/or phenol red free.

Please inquire for custom media requests.

Plating and Expansion Procedure for Cryopreserved Adult Stem Cells

1. Remove cells from liquid nitrogen and place immediately into a 37°C water bath with agitation. Be careful not to submerge the cap of the vial into water. Do not leave the vials in water bath after most of the content has thawed. Rinse the vials with 70% ethanol before taking them to the culture hood.
2. Upon the thawing, add the cells to a sterile conical bottom centrifuge tube, containing 10 ml of Growth Medium (Preadipocyte Medium (PM-1).
3. Centrifuge at 280 x g, 20°C, 5 minutes. Aspirate the medium and resuspend cells in a volume of PM-1 appropriate for counting the cells. Count using a hemacytometer.
4. Place approximately 6.7×10^5 cells in T-75 culture flasks using PM-1.
5. Incubate cells until they are 85-90% confluent (in about 4-5 days). Do not let the cells become 100% confluent (see Figure 1-A, page 8 for picture of 100% confluent cells). Cells will need to be fed every other day with PM-1.
6. Aspirate medium and wash adult stem cells 4-5 times using sterile Phosphate Buffered Saline (PBS) to remove all traces of serum (until there is no foaming of the medium). Remove the PBS and release the cells from the flask bottom by adding 2 mL/T-75 flask (or 6 ml/T-225 flask) of 0.25% trypsin/ 2.21mM EDTA solution. Allow cells to trypsinize for 5 minutes at 37°C. Tap the flask gently to loosen the cells.
7. Neutralize the trypsin using 7 ml PM-1 per T-75 flask (or 21 ml per T-225 flask). Check the flask under a microscope to ensure all cells are free of the flask bottom.
8. Count the cells and plate in desired format. Ensure cells are evenly suspended when plating large numbers of plates or flasks. Do not agitate plates and flasks after plating. Place in a humidified incubator at 37°C and 5% CO₂, making sure the surface is level for even cell distribution.

Adipogenesis Protocol

Differentiation of Adult Stem Cells into Adipocytes

Please note: Primary cells can be very sensitive to brands of cultureware. Zen-Bio does not currently recommend the use of Falcon brand plates or flasks for adipogenesis. Our scientists are using Nunc, Costar/Corning, or Greiner bio-one Cellstar tissue culture treated plates and flasks for adipogenesis. Please contact us if you have any questions.

1. Remove cells from liquid nitrogen and place immediately into a 37° C water bath and agitate while in bath. Be careful not to submerge the cap of the vial into water. Do not leave the vials in water bath after most of the content has thawed. Rinse the vials with 70% ethanol before taking them to the culture hood.
2. Upon thawing, transfer the cells to a sterile conical bottom centrifuge tube containing 10 ml of Preadipocyte Medium (cat # PM-1). Centrifuge: 1,200 rpm (282 X g) / 20°C / 5 minutes. Aspirate the supernatant. TAKE CARE TO NOT ASPIRATE ANY OF THE CELL PELLET.
3. The cell vial contains a minimum of 1.0 or 2.0 x 10⁶ viable cells; however, we recommend performing a cell count to determine a more exact number of cells. Resuspend the cell pellet in 2 ml Preadipocyte medium; dilute an aliquot in 0.4% trypan blue solution. We suggest withdrawing an aliquot of 50 µl of cells and mixing with 100 µl of the trypan blue solution, resulting in a dilution factor of 3. Count live (unstained) cells on a hemacytometer.
4. Plate approximately 40,625 cells / cm² using the media volumes from the table below. Refer to the manufacturer's specifications for the specific cultureware brand you are using.

| FORMAT | VOLUME PER WELL | TOTAL VOLUME PER FORMAT* |
|---------------|--------------------|--------------------------------|
| 96 well plate | 150 µl | 14.4 ml |
| 48 well plate | 500 µl | 24.0 ml |
| 24 well plate | 1 ml | 24.0 ml |
| 12 well plate | 2 ml | 24.0 ml |
| 6 well plate | 3 ml | 18.0 ml |
| 10 cm dish | 15 ml | 15.0 ml |
| T-75 flask | 20 ml | 20.0 ml |
| T25 flask | 7 ml | 7.0 ml |

***We recommend preparing slightly larger volumes to allow for loss due to foam and pipet error.**

5. Plate cells in desired format and place in a humidified 37°C incubator with 5% CO₂. Do not agitate the plate, as cells will not plate evenly.
6. Twenty-four hours after plating, check the plates for confluence. If they are not completely confluent, leave for an additional 24 hours maximum before inducing differentiation. If the cells are not confluent after 48 hours, DO NOT INDUCE DIFFERENTIATION (differentiation will be poor). Contact Zen-Bio immediately.

7. To start the process, aspirate the entire volume of Preadipocyte Medium from all wells. Add the appropriate volume of Adipocyte Differentiation Medium (catalog # DM-2) to the wells (see Table 1. Feeding Volumes). Incubate plate for 7 days at 37°C and 5% CO₂.
8. After 7 days, cells should be fed by removing some of the media and replacing with fresh Adipocyte Medium (catalog # AM-1) (See Table 1. Feeding Volumes). **Caution: Do not dry the wells. Add new medium gently. If using an automatic feeder, set the slowest flow rate possible.**
9. Two (2) weeks after the initiation of differentiation, cells should appear rounded with large lipid droplets apparent in the cytoplasm (see Figure 1-C). Cells are now considered mature adipocytes and are suitable for most assays.

Table 1. Adipogenesis: Feeding Volumes

| Format | Plating | Change PM-1 to DM-2 | | Change DM-2 to AM-1 | | Change AM-1 to AM-1 | |
|---------------|-------------|---------------------|--------------|---------------------|--------------|---------------------|--------------|
| | IN | OUT | IN | OUT | IN | OUT | IN |
| 96 well plate | 150 µl/well | 150 µl/well | 150 µl/ well | 90 µl/well | 120 µl/well | 90 µl/well | 90 µl/well |
| 48 well plate | 500 µl/well | 500 µl/well | 500 µl/well | 300 µl/well | 400 µl/well | 300 µl/well | 300 µl/well |
| 24 well plate | 1.0 ml/well | 1.0 ml/well | 1.0 ml/well | 0.6 ml/well | 0.8 ml/well | 0.6 ml/well | 0.6 ml/well |
| 12 well plate | 2.0 ml/well | 2.0 ml/well | 2.0 ml/well | 1.2 ml/well | 1.6 ml/well | 1.2 ml/well | 1.2 ml/well |
| 6 well plate | 3.0 ml/well | 3.0 ml/well | 3.0 ml/well | 1.8 ml/well | 2.4 ml/well | 1.8 ml/well | 1.8 ml/well |
| T-75 flask | 20 ml/flask | 20 ml/flask | 20 ml/flask | 12 ml/flask | 16 ml/flask | 12 ml/flask | 12 ml/flask |
| T-25 flask | 7 ml/flask | 7 ml/flask | 7 ml/flask | 4.2 ml/flask | 5.6 ml/flask | 4.2 ml/flask | 4.2 ml/flask |

A. 100% Confluent Adult stem cells**B. 1-week-old adipocytes**
(1 wk post-differentiation)**C. 2-week-old adipocytes**
(2 wks post-differentiation)

PREADIPOCYTE —————> MATURE ADIPOCYTE

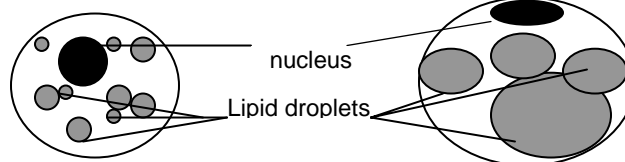
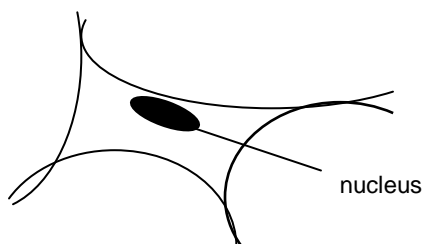
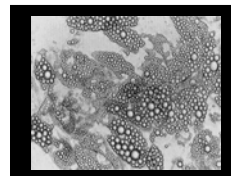
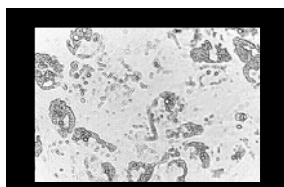
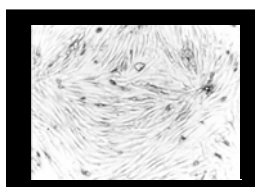


Figure 1: Photographs of 100% confluent Adult stem cells (ASC) (A), 1-week-old (post-differentiation) cultured adipocytes (B) and mature (2 weeks post-differentiation) cultured Adipocytes (B). These are unstained photographs of human adult stem cell morphology (20X). The cells should appear comparable in appearance to these pictures.

Osteogenesis Protocol

Differentiation of Adult Stem Cells into Osteoblasts

1. Remove cells from liquid nitrogen and place immediately into a 37° C water bath and agitate while in bath. Be careful not to submerge the cap of the vial into water. Do not leave the vials in water bath after most of the content has thawed. Rinse the vials with 70% ethanol before taking them to the culture hood.
2. Upon thawing, transfer the cells to a sterile conical bottom centrifuge tube containing 10 ml of Preadipocyte Medium (cat # PM-1). Centrifuge: 1,200 rpm (282 X g) / 20°C / 5 minutes. Aspirate the supernatant. TAKE CARE TO NOT ASPIRATE ANY OF THE CELL PELLET.
3. The cell vial contains a minimum of 1.0 or 2.0 x 10⁶ viable cells; however, we recommend performing a cell count to determine a more exact number of cells. Resuspend the cell pellet in 2 ml Preadipocyte medium; dilute an aliquot in 0.4% trypan blue solution. We suggest withdrawing an aliquot of 50 µl of cells and mixing with 100 µl of the trypan blue solution, resulting in a dilution factor of 3. Count live (unstained) cells on a hemacytometer.
4. Plate approximately 30,000 cells / cm² using the media volumes from the table below. Refer to the manufacturer's specifications for the specific cultureware brand you are using.

| FORMAT | VOLUME PER WELL | TOTAL VOLUME PER FORMAT | NUMBER CELLS PER FORMAT |
|---------------|--------------------|----------------------------|------------------------------------|
| 96 well plate | 150 µl | 15 ml /plate | 0.93 X 10 ⁶ cells/15 ml |
| 48 well plate | 500 µl | 24ml/plate | 1.25 X 10 ⁶ cells/25 ml |
| 24 well plate | 1 ml | 25ml/plate | 1.44X 10 ⁶ cells/26ml |
| 12 well plate | 2 ml | 25ml/plate | 1.5 X 10 ⁶ cells/26ml |
| 6 well plate | 3 ml | 18 ml/plate | 1.8 X 10 ⁶ cells/20ml |
| 10 cm dish | 15 ml | 15ml/dish | 2.25 X 10 ⁶ cells/15 ml |
| T-75 flask | 20 ml | 20 ml/flask | 2.25 X 10 ⁶ cells/20ml |
| T25 flask | 7 ml | 7 ml/ flask | 0.75 X 10 ⁶ cells/7ml |

***We recommend preparing slightly larger volumes to allow for loss due to foam and pipet error.**

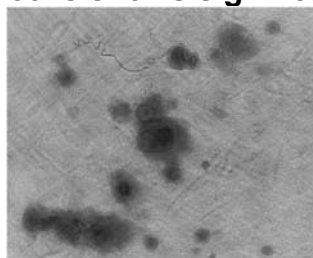
5. Plate cells in desired format and place in a humidified 37°C incubator with 5% CO₂. Do not agitate the plate, as cells will not plate evenly.
6. Twenty-four hours after plating, aspirate the entire volume of Preadipocyte Medium from all wells. Add the appropriate volume of Osteoblast Differentiation Medium (catalog # OB-1) to the wells (see Table 3. Osteogenesis Feeding Volumes).
7. Incubate cells at 37°C and 5% CO₂.
8. Feed cells every 3 days with Osteoblast Differentiation Medium (catalog # OB-1).

Table 3. Osteogenesis Feeding Volumes

| Format | Volume per well |
|---------------|------------------|
| 96 well plate | 150 μ l/well |
| 48 well plate | 300 μ l/well |
| 24 well plate | 1.0 ml/well |
| 12 well plate | 2.0 ml/well |
| 6 well plate | 3.0 ml/well |
| T-75 flask | 12 ml/flask |
| T-25 flask | 7 ml/flask |

Figure 2. Osteoblasts, (20X)

Alizarin red staining of 14 day old cells shows significant mineralization.



Chondrogenesis Protocol

Differentiation of Adult Stem Cells into Chondrocytes

1. Remove cells from liquid nitrogen and place immediately into a 37° C water bath and agitate while in bath. Be careful not to submerge the cap of the vial into water. Do not leave the vials in water bath after most of the content has thawed. Rinse the vials with 70% ethanol before taking them to the culture hood.
2. Upon thawing, transfer the cells to a sterile conical bottom centrifuge tube containing 10 ml of Preadipocyte Medium (cat # PM-1). Centrifuge: 1,200 rpm (282 X g) / 20°C / 5 minutes. Aspirate the supernatant. TAKE CARE TO NOT ASPIRATE ANY OF THE CELL PELLET.
3. The cell vial contains a minimum of 1.0 or 2.0 x 10⁶ viable cells; however, we recommend performing a cell count to determine a more exact number of cells. Resuspend the cell pellet in 2 ml Preadipocyte medium (PM-1), dilute an aliquot in 0.4% trypan blue solution. We suggest withdrawing an aliquot of 50 µl of cells and mixing with 100 µl of the trypan blue solution, resulting in a dilution factor of 3. Count live (unstained) cells on a hemacytometer.
4. Remove the supernatant and resuspend the cell pellet in 1.2 % alginate solution at 4 x 10⁶ cells/ml. Pipette up and down without creating bubbles to mix thoroughly.
5. Draw the cell-seeded alginate suspension into a sterile 10 cc syringe using a 22 gauge needle.
6. Add 3 ml of CaCl₂ (102 mM) into one well of a 6 well culture plate.
7. Carefully and slowly dispense equal-sized droplets of the cell-seeded alginate solution into the CaCl₂ solution (dispense 10-30 beads per well taking care to avoid clumping the beads). Cure the beads in the CaCl₂ solution for 10 minutes at room temperature.
8. Using a glass pipette, aspirate the CaCl₂ solution off the beads. Be careful not to aspirate the beads with the solution.
9. Wash the cell-seeded alginate beads three times with NaCl (150 mM) and then one more time with DMEM-HG.
10. Add 3 ml of the Chondrogenic Differentiation Medium (cat# CM-1).
11. Incubate at 37°C, 5.0 % CO₂, and 95% relative humidity for the duration of the experiment.
12. Change media every three days.

Troubleshooting Guide

| Observation | Possible causes | Suggestions |
|--|--|---|
| Adult stem cells do not differentiate | <ol style="list-style-type: none"> 1. Cells have been passaged too many times 2. Differentiation conditions not optimal 3. Cells were plated at a low density 4. Cultureware used not optimal for human primary adipocytes | <ol style="list-style-type: none"> 1. Use cells of a lower passage number 2. Use our defined differentiation media. 3. Use the cell density recommended in our manual 4. Zen-Bio does not recommend the use of Falcon cultureware for all Adipogenesis cell culture applications 5. Verify the surface area for the cultureware brand you are using. |
| Adult stem cells do not grow | <ol style="list-style-type: none"> 1. Cells have been passaged too many times 2. Cells expanded too high | <ol style="list-style-type: none"> 1. Use cells of a lower passage number 2. Do not exceed 1:6 expansion ratio |
| Edge effects | <ol style="list-style-type: none"> 1. Medium in outside wells evaporated | <ol style="list-style-type: none"> 1. Ensure a saturated humidity in the incubator and feed the cells no less than every 3 days. Make sure multiple plates are stacked no more than 3 plates high. |
| Adipogenesis: Adipocytes appear uneven in each well | <ol style="list-style-type: none"> 1. Medium was completely removed during feeding 2. Fresh medium was added too quickly 3. Cells placed on uneven surface in the incubator | <ol style="list-style-type: none"> 1. Make sure to follow instructions listed in Table 1 Feeding Volumes 2. Add media slowly to each well. Position the pipet tips halfway down, pressing on the side of the wells and slowly release the medium. 3. Place cultureware are on a level surface in the incubator to ensure cells attach evenly. |

Frequently Asked Questions

➤ **Can I pass the cells?**

Adult Stem Cells can be trypsinized and replated several times. They grow slower with each passage and undergo adipogenesis poorly after passage 4. All cells are shipped at Passage 2.

➤ **How fast do the cells replicate?**

The average doubling time is 48-84 hours. However, keep in mind that the replication rate for human adult stem cells varies slightly from donor to donor.

➤ **Should antibiotics be included in the medium?**

Yes. Antibiotics and anti-fungal agents are always recommended since the cells are primary cells. All Zen-Bio media contain antibiotics and/or anti-fungal agents except Adipocyte Basal Medium (cat# BM-1).

➤ **Where are the cells obtained?**

The adult stem cells are isolated from human subcutaneous adipose tissue.

➤ **Do you test for pathogens? Which ones?**

Yes. Each donor is tested via PCR and found non-reactive for HIV-1, HIV-2, HTLV I, HTLV II, hepatitis B and hepatitis C. However, since we cannot test all pathogens, please treat the culture as a potentially infectious agent.

➤ **How do I obtain RNA from the cells? How much RNA can I expect?**

Use RNA Tri-reagent (Molecular Products) or a guanidine thiocyanate solution (Chomzynski protocol). You can expect approximately 20 µg total RNA from a 10 cm dish of adult stem cells.

➤ **What donor information do I receive?**

The donor's age, gender, and BMI are provided in the certificate of analysis that accompanies each lot of cells.

➤ **What is the formulation of Zen-Bio's serum-free media?**

Zen-Bio's serum-free media are not enhanced to supplement the absence of serum. These media are available for assay procedures where cells are rested from serum. Do not differentiate adult stem cells into adipocytes using medium without serum.

➤ **Can the adult stem cells be differentiated into any additional cell types?**

Other researchers have differentiated adult stem cells into muscle, neuronal, and hepatocyte lineages. See references below.

- Mizuno, *et al.* Myogenic differentiation by human processed lipoaspirate cells. *Plastic and Reconstructive Surgery* (2002) 109:199-209.

- Seo, *et al.* Differentiation of human adipose stromal cells into hepatic lineage in vitro and in vivo. *Biochem Biophys. Res. Comm.* (2005) 328: 258-264.

Pathogen Testing

Each donor is tested via PCR and found non-reactive for HIV-1, HIV-2, HTLV I, HTLV II, hepatitis B and hepatitis C. However, no known test can offer complete assurance that the cells are pathogen free. Our products are tested and are free from mycoplasma contamination. Proper precautions and biological containment should be taken when handling cells of human origin, due to their potential biohazardous nature. All human based products should be handled at a BSL-2 (Biosafety Level 2) or higher. Always wear gloves and work behind a protective screen when handling primary human cells.